



## DEPARTMENT OF THE AIR FORCE PACIFIC AIR FORCES

### PRESS RELEASE

374th Airlift Wing  
Public Affairs  
Phone: 042-552-2511  
374aw.pav3@us.af.mil

November 18, 2020  
Yokota Air Base  
Japan

### Yokota Air Base COVID-19 Situation Report

**REMINDER//Call Ahead:** If you are experiencing mild to moderate COVID-19 symptoms (fever, cough, difficulty breathing, fever, chills, muscle aches, fatigue, headache, sore throat, stuffy nose, nausea, or sudden loss of taste and smell) **DO NOT GO TO THE URGENT CARE.** Call the medical appointment line at DSN: 225-8864 Opt. 7 or Cell: 042-552-2510 Ext. 58864 Opt. 7. This COVID hotline is only intended for medical triage. Your call will be answered as soon as possible but delays may occur during periods of high volume. For questions about ROM please utilize your chain of command.

**Information Current as of 18 November 2020 3:00 p.m.**

**1. Health Protection Condition (HPCON) Bravo (Moderate Threat):** The Health Protection Condition for the installation is Bravo and is characterized as a moderate threat and/or a real risk of exposure to personnel due to a significant outbreak of disease in the local area. More information is available in DOD Instruction 6200.03, *Public Health Emergency Management within the DoD*.

**2. Public Health Emergency Declaration:** Continued transmission of COVID-19 cases in the greater Tokyo area and other portions of Japan present a risk to our population. Accordingly, pursuant to DoD Instruction (DoDI) 6200.03, "Public Health Emergency Management (PHEM) Within the DoD," dated 28 March 2019, and Air Force Instruction 10-2519, Public Health Emergencies and Incidents of Public Health Concern, dated 10 December 2019, I have declared a Public Health Emergency under my authority as the installation commander. The following measures are **mandatory** for all personnel present on or assigned to Yokota Air Base including but not limited to U.S. military members, U.S. civilian employees, all dependents, DoD retirees, Host-Nation (HN) employees, contractors, and any other persons accessing this installation. This order also includes those personnel assigned to mission partners/tenant units. These measures will go into effect **18 November 2020** and remain in effect until **8 December 2020** unless renewed and republished or sooner terminated by me or my successor. I will review this policy every 15 days to determine if these measures need to stay in place or be changed in any manner.

All implemented preventative measures are **mandatory** for all personnel present on or assigned to Yokota Air Base including but not limited to U.S. military members, U.S. civilian employees, all dependents, DoD retirees, Host-Nation (HN) employees, contractors, and any other persons

accessing this installation. This order also includes those personnel assigned to mission partners/tenant units. Any person who refuses to obey or otherwise violates an order during this declared public health emergency may be detained. Those not subject to military law may be detained until civil authorities can respond. In addition, any military member who refuses to obey or otherwise violates an order during this declared PHE may be subject to punishment under the Uniform Code of Military Justice (UCMJ). Those not subject to military law who refuse to obey or otherwise violate this order during this PHE may be subject to administrative action including but not limited to early return of dependents, denial of access, or debarment from the installation.

**3. Base Access:** All gates will remain operational with the procedures and hours stated below.

Gate Procedures: When arriving at the gate, please be sure to:

1. Have a face mask on
2. Have your window rolled down
3. Hold up your ID card to be scanned
4. Flip your ID to allow the Security Forces member to verify the picture

Gate Hours of Operation:

-Terminal and West Gate: 24/7 for pedestrians and vehicles; Everyday

-Fussa Gate: Vehicles 0600-2200; Pedestrians 0600-0100; Everyday

-Supply Gate: Vehicles 0600-1800; Pedestrians 0600-2200; Monday-Friday

-East Gate: Vehicles 0500-0100; Pedestrians 0500-0100; Everyday

Please also note that all screening questions have ceased and personnel, SOFA or JASDF, may use any gate.

**4. Base Facilities:**

DoDEA Schools: Please direct questions to DoDEA Pacific and visit [www.dodea.edu/Pacific](http://www.dodea.edu/Pacific) more information.

School Age Care: Open to currently enrolled Single/Dual military.

Child Development Center: Open to currently enrolled members. Reduced hours: 0730 – 1630.

Youth and Teen Center: Closed.

Chapel: The base chapel has resumed in-person worship services with COVID-19 prevention measures in place. Online alternative formats remain available. Follow “Yokota AB Chapel” on Facebook for more information and updates on services and other Chapel program events. For counseling appointments call 225-7009.

Legal Office/Tax Center: Clients seen by appointment only. Call 225-8069 for legal assistance or 225-4926 for the tax center.

Housing Management Office: Clients seen by appointment only. Please coordinate with housing counselors by phone at 225-3252/9258 or email at [374ceshousing@us.af.mil](mailto:374ceshousing@us.af.mil).

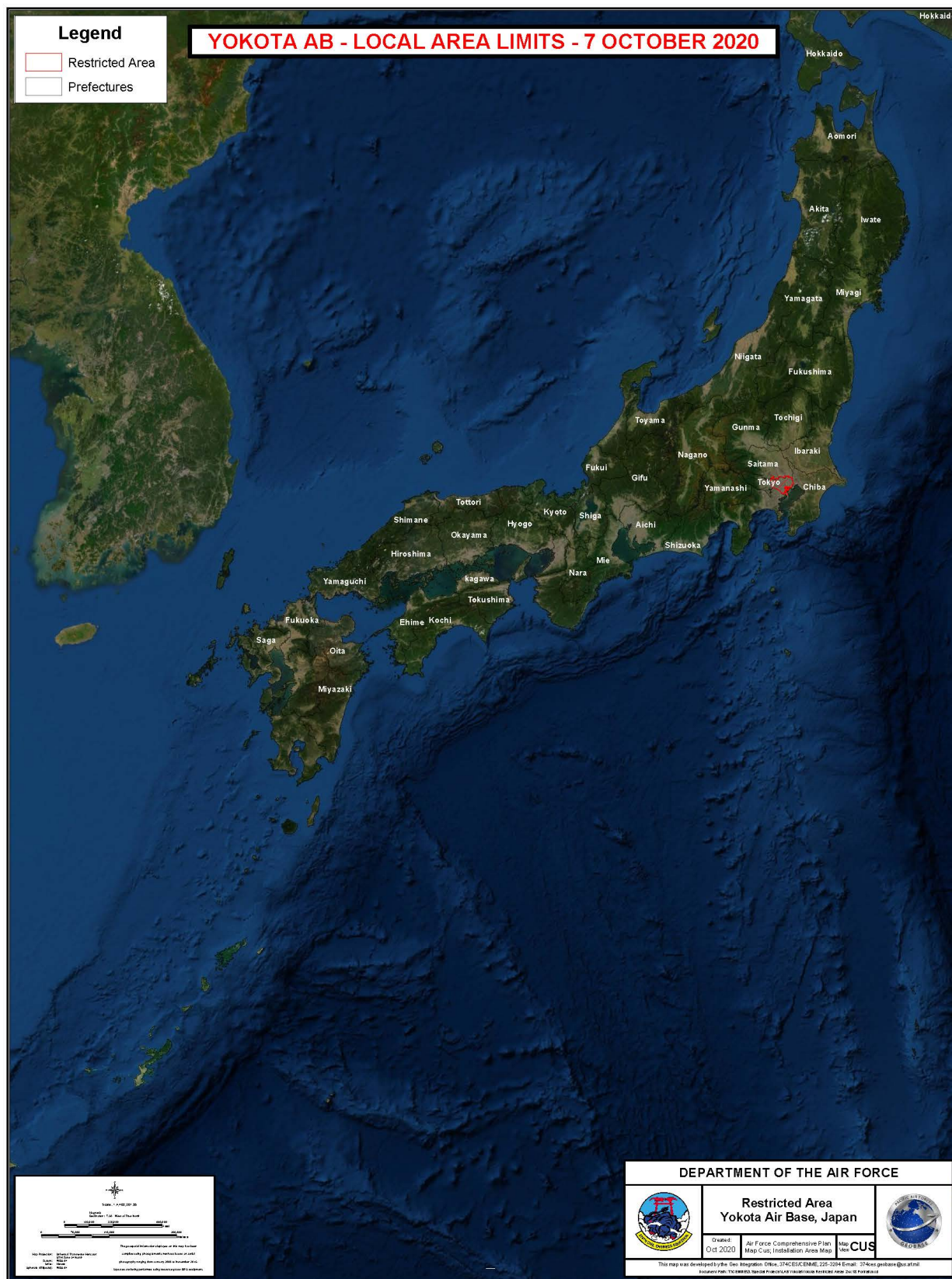
FSS Activities: Please monitor the Yokota FSS website for event updates at <https://yokotafss.com>.

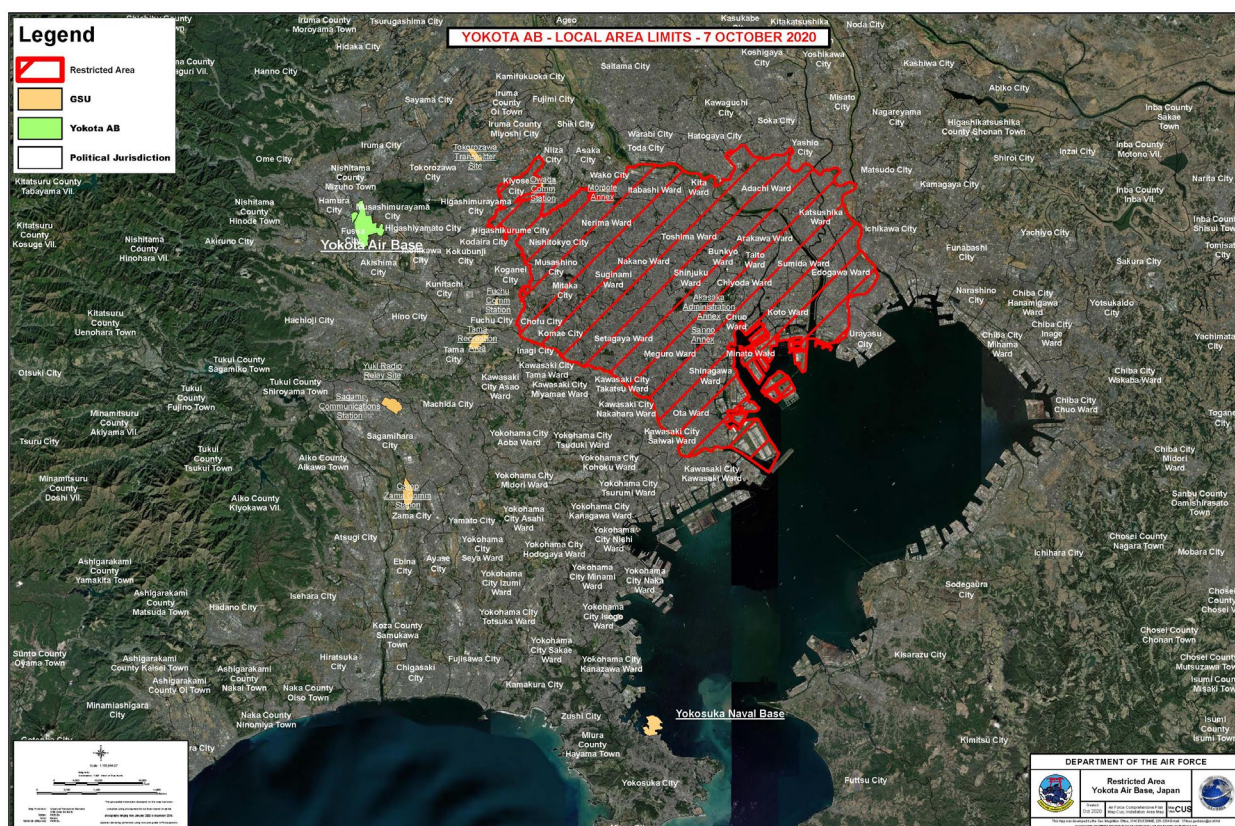
Before you schedule your appointment for a new CAC or Uniformed Service ID Card, visit <https://www.cac.mil/Coronavirus> to see the changes implemented by the DOD concerning CAC/USID cards during COVID-19.

**5. Dependents, Civilians, MLCs:** DoD Civilians and Japanese National Employees must adhere to “sick leave” policies. Work with supervisors for “administrative leave” and alternate schedules/telework due to COVID-19 related Japanese School Closures, etc.

**6. Reporting Directions:** Report to your place of duty as directed. **If you are sick, stay home.** Those who are experiencing symptoms like fever, cough and difficulty breathing, are directed to report this information to their chain of command and to call the medical appointment line at DSN: 225-8864 Opt. 7 or Cell: 042-552-2510 Ext. 58864 Opt. 7. **DO NOT GO TO URGENT CARE IN-PERSON.**

**7. Local Area Definition:** To protect our personnel and families from the continued transmission of COVID-19 cases, the installation commander has established a local area within Japan. **The local area is defined as the country of Japan excluding the Tokyo metropolitan area which is prohibited.** Areas in downtown Tokyo (for example Shibuya, Shinjuku, and Roppongi) are NOT considered part of the local area. Maps that define the local area can be found at <https://www.yokota.af.mil/COVID-19/> and attached to this policy. Members are authorized travel within the local area for any activities not listed as prohibited in paragraphs 7.1, 11, and 14. Members are also authorized to visit other military installations within the local area; however visiting installations that are currently in HPCON Charlie status requires prior approval from the first O-6 in the member’s chain of command. Members who currently live outside of the local area defined above may travel in the immediate vicinity of their residence for essential services such as dining facilities, grocery stores, shopping, schooling, and medical facilities. All DoD uniformed members must remain in the above defined local area whether on duty, on leave, on liberty, or on pass unless traveling outside the local area pursuant to the requirements in paragraphs 7.2, 8, and 12. SOFA status members of the civilian component and SOFA dependents are highly encouraged to remain within the defined local area and any departure from that local area **will** subject them to a 14-day Restriction of Movement upon return. **Any travel into a currently prohibited area – such as Tokyo – without prior authorization in paragraph 12 or for other than mission-essential travel in paragraph 7.2 may result in administrative actions up to and including possible debarment from the installation.** For anyone with an extraordinary situation requiring travel beyond definitions in this policy and not covered in paragraphs 7.2, 8, and 12, requests can be made for travel **authorization** from the first General Officer/SES in your chain of command or myself for 374 AW personnel and those units without a local General Officer/SES.





**7.1. Local Area Limitations:** Prohibited non-essential services include bars, night clubs, karaoke clubs, social clubs, amusement/theme parks or any facility with a potential for crowds, close contact, or closed spaces where COVID prevention measures cannot be maintained. Off-base employment should be conducted in a safe manner using the same social distancing procedures used on base. For off-base schools and daycare facilities, parents should be aware of school policies and make a personal decision based on risk involved with the facility used.

## 7.2. Mission-Essential travel:

a. Mission-essential travel outside the local area is authorized during the period of this order. Mission-essential travel includes but is not limited to medical appointments, official duty at another military installation, appointments with Government of Japan officials, U.S. embassy visits, and off-base house hunting. If there are questions on what qualifies as mission essential travel, please consult your chain of command. Proceed directly to the mission essential appointment from your residence or Yokota Air Base and return directly to your residence or Yokota Air Base.

b. Government funded TDY travel within Japan for 374th Airlift Wing personnel will be approved by **the first O-6 in the traveler's chain of command. All TDY travel will require this approval** unless the purpose for travel is one of the 11 exemptions listed on the Secretary of Defense's 22 May 20 memorandum **or unless the travel was previously approved by a General Officer under the prior version of this policy.** Per USFJ policy, mission-essential

travel to a base or installation in HPCON Charlie status requires approval by the first O-6 in the member's chain of command.

## **8. Public Transportation:**

a. Public transportation may be used within Japan under the following conditions. Air travel conducted entirely within the country of Japan is permitted. There is no restriction on accessing airports within Japan. Shinkansen (Japanese bullet train) travel throughout Japan is permitted. Travel by taxi is still allowed. While on any form of public transportation members must wear a face mask at all times with the exception of eating a meal on an airplane or Shinkansen.

b. Use of local trains and buses is permitted at all times. Members must be cautious of overly crowded trains during rush hour and to the extent possible plan their trip accordingly. If members notice a train is overly crowded they are recommended to wait for another train. While on any local train or bus members must wear a face mask at all times.

c. While still prohibited from visiting the Tokyo metropolitan area, members may use a local train or bus for the limited purpose of going to an airport or Shinkansen station in that area to conduct air travel or Shinkansen travel as described in paragraph a. above. While on any local train or bus members must wear a face mask at all times.

## **9. Base Visitation Policy:**

a. All personnel possessing a DoD ID card or other appropriate access card to Yokota Air Base can continue to access the installation. Contractors must be on an Entry Access List or be escorted by an authorized sponsor solely to fulfill their contractual obligations. Contractors are only authorized to visit their designated place of performance.

b. Adult DoD ID card holders can sponsor up to 1 guest per adult DoD ID card holder as a personal visitor on Yokota Air Base. Adult DOD ID card holders are defined as those card holders age 18 years or older. Adult DoD ID card holders can now sponsor up to 8 guests for visiting Tama Hills Recreation Area by signing in at the security station on Tama Hills.

c. In order to sponsor a guest onto Yokota Air Base, the adult DoD ID card holder must go to the Visitor Control Center between the hours of 0600 and 2200, seven days a week to obtain a pass. DoD ID card holders will be able to attain a 24 hour pass for their sponsored guest and must be with their guest at all times while on Yokota Air Base. Official visitors are exempt from these limitations if they are escorted by U.S. or Japanese military personnel and/or U.S. civilian employees to meet with personnel for official duties. Exceptions to this policy for personal visitors will be routed to the first General Officer/SES in the chain of command for tenant organizations that have a General Officer/SES on base. For all other units, I will be the approval authority. An exception to policy form was previously distributed.

**10. Social Gatherings: Due to a recent increase in COVID-19 cases in the local area, all social gatherings are currently limited to 6 persons or 2 families in attendance. Exceptions to this rule may be approved by Squadron Commanders (or equivalent for mission partners/joint service personnel). Social gatherings are defined as groups of people who are**

together outside of the work area for non-mission essential purposes. When dining in restaurants or conducting other activities not prohibited in paragraph 3, personnel should ensure they are maintaining social distancing and wearing cloth masks even when in groups of less than 6 people unless they are only with immediate family members. An exception to **this limited social gathering rule** is allowed for attendance at off-installation religious services so long as attendance can be conducted in a safe manner. Those wishing to attend such services off-installation must exercise caution such as physically distancing requirements and wearing masks except for short duration to take part in religious rituals/rights/observances that require consumption. If members find that services are not being conducted in a safe manner, it is their personal responsibility to remove themselves from such an environment. At all times members will implement social distancing (6 feet or 2 meters) or cloth mask wear even when in groups of less than 20 people unless they are only with immediate family members. Personnel who live outside the defined local area may walk a pet near their residence and engage in outdoor exercise near their residence so long as social distancing can be maintained. Personnel who find themselves in an area with a potential for crowds, close contact, or closed spaces where COVID prevention measures cannot be maintained, should immediately remove themselves from that location. If there are questions on **social** gatherings, please consult your chain of command.

**11. Physical Fitness Activities:** Members are encouraged to engage in physical fitness activities where social distancing and cleaning of equipment can be maintained. However, there still remains a risk in group physical fitness activities where masks are not worn, social distancing cannot be maintained, or equipment is shared between multiple individuals. Accordingly, the following group fitness activities are permitted where masks are worn or social distancing is maintained: volleyball, baseball, softball, tennis, and gymnastics. All equipment should be thoroughly cleaned after use in a permitted activity. Other group activities that involve close contact between participants with a high probability of transmitting respiratory particles are still prohibited to include, but not limited to, soccer, basketball, racquetball, football, wrestling, hockey, rugby, ultimate Frisbee, and contact martial arts. Modified practice of these prohibited activities (i.e. individual skill drills, conditioning, forms practice, shooting practice, etc.) may take place where strict social distancing is maintained or masks are worn and when there is no sharing of equipment or thorough cleaning of equipment is maintained.

**12. Leave:** Leave to a personal residence or in the local area may be approved by a first line supervisor. Leave for military or civilian employees outside of Japan may be approved by their squadron commander, or equivalent. **Any member wanting to take leave or non-mission essential travel in the Tokyo metropolitan area will be required to submit an Exception to Policy request to my office.** Any request to take leave at a base or installation in HPCON Charlie status requires approval by the first O-6 in the member's chain of command. Approval authorities are required to conduct a risk assessment of the travel with the member and verify the HPCON status of a leave location before approving a leave request. Exception to Policy requests approved by the first General Officer in the member's chain of command are still currently required to fly via Space Available status on all flights per SecAF policy.

**13. Space Available Travel:** Space available (Space-A) travel is limited to 'category one' (Emergency Travel). For more information, please contact the passenger terminal.

#### **14. Mandatory Mask Wear:**

a. Consistent with Secretary of Defense guidance, all individuals on Yokota Air Base or Tama Hills Recreation Area will wear cloth face coverings when they cannot maintain social distance. This does not include inside a member's personal residence or while in private lodging in the defined local area. Children 36 months old and younger are not required to wear a face mask. Children in Child Development Center programs are also not required to wear face masks. Multiple individuals riding in the same vehicle are required to wear face masks; however, this does not apply to immediate family members.

b. Additionally, all personnel who wish to access Yokota Air Base or Tama Hills Recreation Center shall wear masks when in public off-installation in the defined local area. Japanese citizens commonly wear masks in public settings and our personnel should also do so off-installation at this time of heightened COVID response to prevent the spread of infection and to promote a responsible image to the host nation civilian population. Additionally, wearing masks off-installation is a preventive and risk mitigation measure that can allow the increase of off-installation activities in a safe manner. Members may remove masks while conducting outdoor exercise activities. Members may temporarily remove their masks while actively consuming food at a restaurant provided they wear a mask into the restaurant and put the mask back on when they are finished with their meal. Any member declining to wear a mask in public during the period of this order and not under one of the exceptions mentioned above may be temporarily denied access to the installation or debarred.

Masks/face coverings are mandatory at the Yokota Air Base Commissary, Base Exchange and all 374th Medical Group, Security Force Squadron and Force Support Squadron facilities unless you are actively working out while practicing physical distancing in the fitness center.

Units will adhere to the five elements of military professional standards: neatness, cleanliness, safety, uniformity, and military image. Face coverings worn by uniformed military members will be conservative, professional, and in keeping with dignity and respect. Any cloth items worn as face coverings (i.e., neck gaiters, neck warmers, balaclavas, etc.) should be functional, cleaned, and maintained in compliance with current AFIs and should cover the mouth and nose. Please contact your unit leadership concerning issued cloth masks for sponsors and dependents.

N-95 and surgical masks should be reserved for health care workers. The use of a cloth face covering does not prevent the wearer from getting sick or eliminate the need to continue the primary mitigation efforts to stop the spread of COVID-19. All personnel should continue to maintain six feet between themselves and others whenever possible. The cloth face covering is not a substitute for physical distancing. The cloth face covering is to help prevent those who are asymptomatic from transmitting, more than protecting oneself from potentially contracting the virus. Please, continue to check the Centers for Disease Control and Prevention (CDC) website for more information (<https://www.cdc.gov/>).

**15. Contact Tracing:** Daily contact tracing logs are required for all military members, civilian component, SOFA-status dependents, and local national employees. Logs will only be reviewed by medical professionals. Log entries are required if the contact meets the following conditions:

- a. Being within approximately 6 feet (2 meters) of an individual for longer than **15** minutes with or without a mask on; (Off-base - record the location and duration of your visit)
- b. Anyone with whom you had physical contact while caring for, living with, or visiting (with the exception of your immediate family living in your home);
- c. Anyone with whom you shared a health care waiting room (please denote time, name of clinic, and location of waiting room; no need to write down all patients names); and
- d. Anyone having direct contact with an individual's secretions (e.g. being coughed or sneezing on).

## **16. Highlights/Preventive Measures:**

We will continue to monitor the situation with regard to COVID-19 and provide updates as we receive them. If you or someone you know may be exhibiting these symptoms please contact the Medical Group appointment line at DSN 225-8864 Opt. 7. This COVID hotline is only intended for medical triage.

For updates on the coronavirus, please visit

<https://www.cdc.gov/coronavirus/2019-ncov/index.html>

or <https://www.who.int/emergencies/diseases/novel-coronavirus-2019/advice-for-public>.

### **Signs and Symptoms**

- ❖ Fever
- ❖ Cough
- ❖ Difficulty breathing
- ❖ Fever
- ❖ Chills
- ❖ Muscle aches
- ❖ Fatigue
- ❖ Headache
- ❖ Sore throat
- ❖ Stuffy nose
- ❖ Sudden loss of taste and smell

### **Prevention/Recommendations**

- ❖ Avoid close contact with sick people
- ❖ Stay home if you are sick
- ❖ Avoid touching your face
- ❖ Clean and disinfect surfaces and common use items
- ❖ Cover your mouth and nose with a tissue or your sleeve (not your hands) when coughing or sneezing
- ❖ Wash your hands often with soap and water for at least 20 seconds; use an alcohol-based hand sanitizer if soap and water are not available

## **16. Resources**

Your Supervisor & Chain of Command for questions on policy.  
Medical Group Appointment Line for medical triage only: DSN: 225-8864 Opt. 7 or Cell:  
042-552-2510 Ext. 58864 Opt. 7.  
Yokota Air Base Facebook (@YokotaAirBase): <https://www.facebook.com/yokotaairbase>  
Yokota Air Base Website: <https://www.yokota.af.mil/COVID-19/>  
Yokota Connect App  
Commander's Access Line (374AW.PA.CommandersAction@us.af.mil)