

374th Airlift Wing In-Flight Guide



January 2025

374th Airlift Wing Strategy

TABLE OF CONTENTS

Welcome Letter.....	3
374th Airlift Wing Overview.....	4
374th Airlift Wing History.....	5
Yokota Air Base Timeline.....	6
Mission Scope	8
Yokota by the Numbers.....	10
Yokota FY2024 budget.....	12
374 AW Operational Approach.....	14
374 AW Mission-Vision-Priorities.....	20
374 Operations Group Mission.....	21
374 Maintenance Group Mission.....	22
374 Mission Support Group Mission.....	23
374 Medical Group Mission.....	24
Mission Partners.....	25
PACAF Battle Rhythm.....	26
374 AW Battle Rhythm	27
Gatekeeper Process.....	28
Helpful Links.....	29
CY25 Holiday Schedule.....	30
Disaster Preparedness.....	31
Notes.....	37



Welcome to Yokota Air Base, Japan!

We are excited you are joining our vibrant and diverse community, located approximately 30 miles (48 km) west of Tokyo. Team Yokota supports critical missions across the Pacific. Our base hosts over 60 mission partners and tenant units, ensuring the readiness and mobility of U.S. forces across the region. Altogether, our community includes more than 11,500 dedicated service members, civilians, and family members. We aim to provide a welcoming environment where everyone can thrive.

Our mission at Yokota is clear: **Sustain and maneuver forces at the speed of need.** We pride ourselves on fostering ONE community, synchronized logistics, and a disciplined, ready force. As you settle in, we encourage you to take advantage of the wide array of services and resources available to you, from our child development centers to recreation programs and the fitness center.

To stay connected and informed, scan the QR code and download the **USAF Connect App**. These are essential resource for updates, services, and everything you need during your time at Yokota. It's the easiest way to access critical information about the base, events, and services to help you transition smoothly and stay connected to your community.



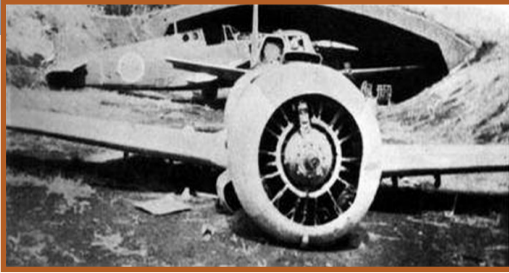
We look forward to seeing you around the base as we work together to uphold our mission and values. If you have any questions, don't hesitate to reach out to your sponsor or visit our newcomer resources [online](#).



Samurai Strong!

Col. Richard F. McElhaney
Installation Commander

Yokota Air Base History



The Imperial Japanese Army opened Yokota Air Base as Tama Army Airfield in March 1940 because of its location in the Tama Prefecture. The name was used from April 1940 until September 4th, 1945. During World

War II, U.S. intelligence sources viewed the base from the air and called it Yokota because of its proximity to Yokota Village to the northeast. Under the Japanese, the base was used as a testing base for new aircraft. The base received only minor damage during the war and remained fully operational until the surrender of the Imperial Armed Forces in August 1945.

In mid-September 1945, Col William Bell of the U.S. Army Air Corps took command of Yokota AB. In the early years as an American base, it hosted B-29 bombers and was headquarters for the Far East Air Forces Bomber Command.



The wing was among the first to the fight in the

Korean War, and also provided critical airlift and air evacuation support during the Vietnam War. When the U.S. occupation of Japan ended, the U.S. Air Force was charged with providing Japan's air

defense and fighter squadrons were stationed at Yokota, as well as Strategic Air Command bombers and reconnaissance aircraft.

The first C-130 arrived on base in April of 1961. In 1971 fighters left Yokota for good and in the mid-70s, 5th Air Force and U.S. Forces Japan moved to Yokota. Since the mid-1970s, the wing's primary mission has been theater airlift in support of Indo-Pacific Command.



YOKOTA AIR BASE

TIMELINE

- **March 1940** - Imperial Japanese Army opens Tama Army Airfield, located in Tama Prefecture. Local residents referred to it as Fussa Army Airfield due to its close proximity to Fussa Village. It was renamed Yokota AB after a nearby village in 1946 by Americans.
- **April 1940 - September 4, 1945** - The base had two primary missions: test flying newly designed Army aircraft and training all Army Air Force maintenance personnel.
- **September 4, 1945** - American forces arrived and took charge of all weapons and base security. Nearly 200 aircraft, including a reconstructed B-17 with Norden bombsight, were discovered.
- **September 6, 1945** - The base was given to the American Occupation forces and became an air cargo installation until the runway was destroyed.
- **December 31, 1945 - August 15, 1946** - Construction of a 10,000 foot runway and new facilities.
- **1946 - 1950** - Yokota AB supported bomber, reconnaissance, and air defense missions during the occupation of Japan.
- **1950 - 1953** - Headquarters Far East Air Forces Bomber Command and 98th Bomb Wing flew combat operations over Korea from Yokota AB.
- **1954 - 1971** - Base units flew air defense, bomber, and inflight refueling missions. Base units supported Southeast Asian (SEA) operations until 1971 when all flying units were withdrawn from Yokota AB.
- **1970 - 1974** - Kanto Plain Consolidation Program — the Government of Japan (GOJ) constructs new facilities at Yokota AB. As USAF accepts new facilities, it withdraws from several military installations on the Kanto Plain and returns the property to the GOJ. The base becomes the "Pacific Hub" for strategic airlift. In August 1974, USFJ/5AF headquarters moved from Fuchu AS to Yokota AB.
- **1978** - The 316th Tactical Airlift Group, a component of the 374th Tactical Airlift Wing (TAW) arrived at Yokota AB to supervise C-130 intra theater airlift.
- **1989** - 374 TAW transfers from Clark AB to Yokota AB.
- **April 1, 1992** - 374 TAW redesignated 374th Airlift Wing, transferred from AMC to PACAF, and becomes host unit at Yokota AB.

374th AIRLIFT WING

TIMELINE

- **November 12, 1942** - Activated in Brisbane, Australia.
- **1942 - 1945** - Island-hopped MacArthur's forces from Australia to Japan.
- **1945 - 1950** - Intra theater airlift for U.S. occupation forces.
- **June 25, 1950 - 1953** - Evacuated civilians from Korea then flew combat airlift, airdrop, and aeromedical evacuations in Korea and the Pacific.
- **April 1953** - Flew first of several groups of repatriated POWs from Korea to Japan and subsequent UN POWs.
- **1954** - Flew into Indo-China with observers, maintenance personnel, and liaison officers. Evacuated wounded French soldiers. Trained C-46 pilots for JASDF.
- **1957** - Inactivated.
- **1966** - Activated at Naha AB, Okinawa. Flew combat airlift missions to Southeast Asia and throughout Western Pacific.
- **1971** - Transferred to Ching Chaun Kang AB, Taiwan, with the same mission.
- **March 1973** - Repatriated American POWs from Hanoi, transferred to Clark AB, P.I.
- **1975** - Participated in Operations Babylift and New Life. Dropped a 15,000-lb bomb on Koh Tang Island to create a helicopter landing area for the SS Mayaguez recovery operation.
- **1975 - 1989** - Flew intra theater airlift and aeromedical evacuations throughout the Western Pacific. Transferred to Yokota AB in 1989, redesignated an airlift wing, transferred to PACAF, and became host unit at Yokota AB on April 1st, 1992.
- **1992 - 1998** - Supported Desert Shield/Desert Storm, JTF-Full Accounting, JTF-Pacific Haven, Kobe earthquake relief, and Sakhalin Island earthquake relief.
- **2001** - Supported Enduring Freedom and the Global War on Terrorism airlifting cargo and personnel throughout the Pacific theater of operations.
- **2003** - On September 12th, ended the C-9 Nightingale aeromedical evacuation mission, flown since July 1989, when the mission moved under the wing from Clark AB.
- **2004 - 2005** - Deployed to Utapao, Thailand, and provided humanitarian relief as part of Unified Assistance after a December 26th 2004 tsunami in Southeast Asia left some 300,000 people dead or missing, and upwards of a million more displaced.

Mission Scope



Although the wing's headquarters is located at Yokota AB, the men and women of the 374th Airlift Wing and its mission partners are located across the Indo-Pacific region, expanding mission reach at various locations including:

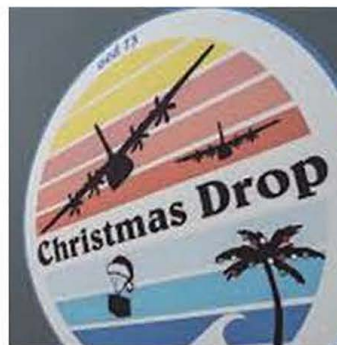
- Locations throughout Japan
- South Korea
- Singapore
- Diego Garcia
- Australia



Yokota by the numbers



EXERCISES AND OPERATIONS	
BEVERLY MORNING 24-1	VALIANT SHIELD
OPERATION CHRISTMAS DROP	JOINT FORCIBLE ENTRY 25
PACIFIC ANGEL 24	FREEDOM SHIELD
JOINT PACIFIC MULTINATIONAL READINESS CENTER	80th D-DAY ANNIVERSARY FLIGHT
RED FLAG-AK	AGILE REAPER
COPE SOUTH	ATLAS RAW
COPE NORTH	BALIKATAN
COPE WEST	JGSDf AIRBORNE
TIGER TRIUMPH	KEEN EDGE
KOREA FLYING TRAINING 24	KEEN SWORD
HERCULES GUARDIAN	70th ANNIVERSARY C-130 FLIGHT



ONE COMMUNITY	
BABIES DELIVERED	119
GEOGRAPHICALLY SEPARATED UNITS	18
MAIL ITEMS PROCESSED/DISPATCHED	277.1K
FAMILY CHILD CARE HOURS	1.2K
FSS PATRONS	1.2M
LOCAL RESIDENTS	730K
PERMANENT PERSONNEL	11.5K
PETS BOARDED	7.9K



THE HUB	
TOTAL SORTIES FLOWN	9.5K
TOTAL MAINTENANCE ACTIONS	47K
TOTAL CONTROLLED FLIGHTS	26.9K
TOTAL PASSENGERS (AIR)	87.5K
COMMUNICATION SECURITY ASSETS	2.6K
CONTRACT ACTIONS (\$)	772M
CONSTRUCTION PROJECTS	35
TOTAL CARGO (TONS)	58.1K
GALLONS OF FUEL	18.2M
VEHICLES MAINTAINED	1.5K
DISTINGUISHED VISITORS SUPPORTED	434
PATIENT MOVEMENT MISSIONS	27
IT ASSETS	10K



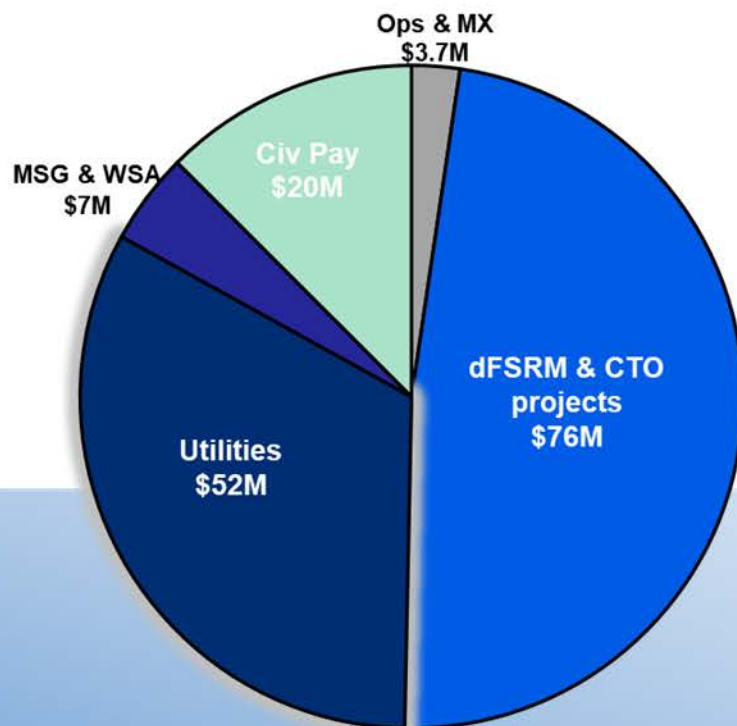
DISCIPLINE AND READINESS	
TOTAL AF LEVEL AWARDS	4
TOTAL MAJCOM LEVEL AWARDS	36
PATIENT ENCOUNTERS	60.2K
BLOOD COLLECTED (UNITS)	182
DFAC MEALS SERVED	176K
FITNESS CENTER HEADCOUNT	474K
YOKOTA UNIVERSITY COURSES	84
FLY AWAY SECURITY MISSIONS	42
TROPICAL WEATHER FORECASTS	170
SURGICAL PROCEDURES	484



Yokota FY24 Budget Summary



FY25 Budget: \$159M



Top Funded Unfunded Requests

- C-130 Qual Shortfall - \$1.4M
- Wing Operations Center C2 Consolidation - \$5.3M
- Giant Voice Upgrades - \$107K
- dFSRM Project Shortfall - \$15M
- Incinerator Maintenance - \$2.5M

Top Successes

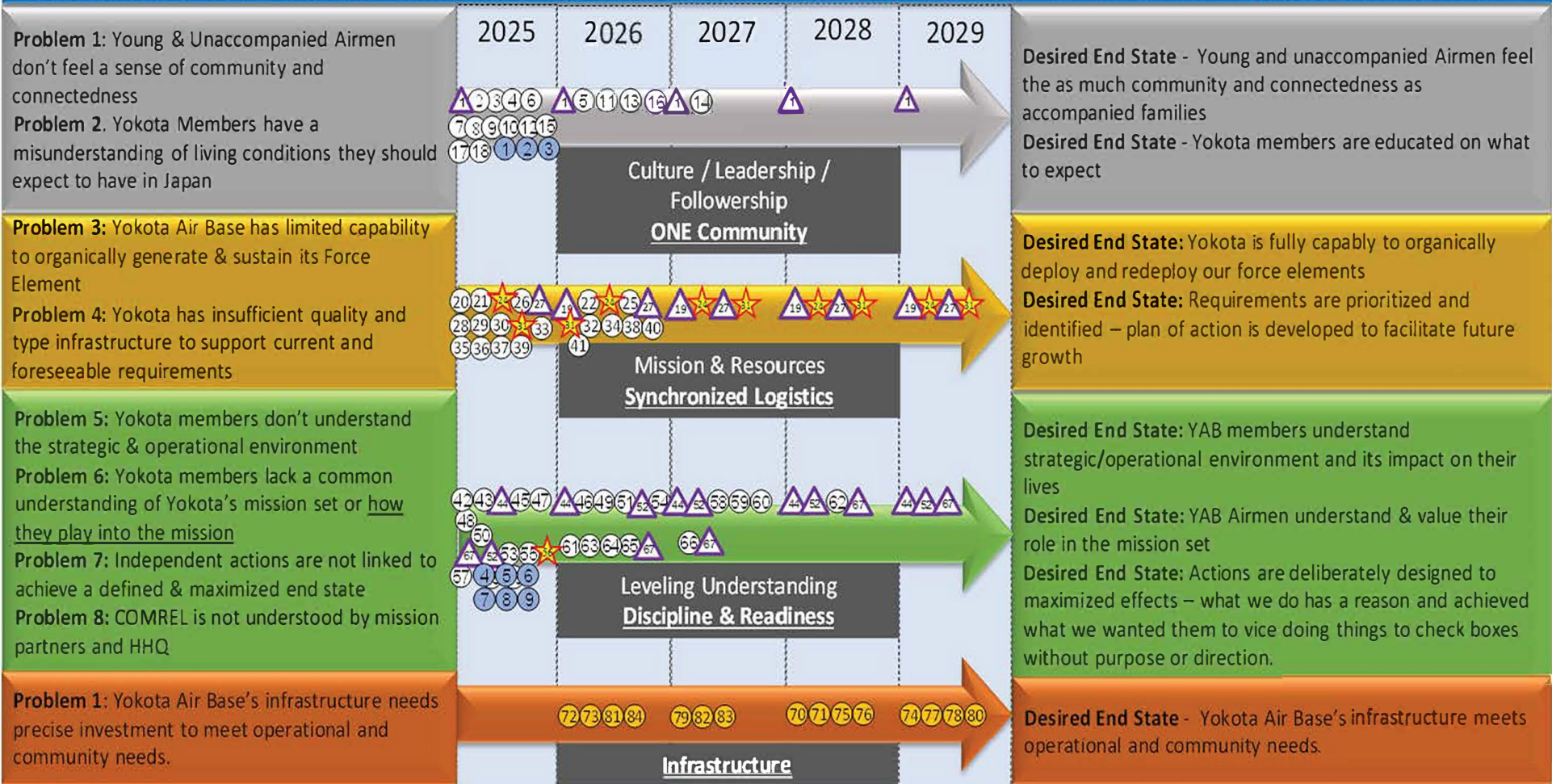
- Received \$36M from AFIMSC to renovate Enlisted Unaccompanied Dormitory (Bldg. 118)
- Received \$2M to initiate design phase for North/West Areas Water Distribution project
- Resolved FY25 dFSRM discrepancy (\$3.8M plus-up)
- Executed JP¥1.5M on resin to initiate treatment for PFAS contaminated water and working on a long-term contracting solution for PFAS contaminated water.

374th Airlift Wing Operational Approach



374th Airlift Wing Operational Approach

Problem Statement: 374AW must create an identity and synchronize efforts to maximize effects for a contested environment.



Commander's Intent: Synchronize. Discourage compartmentalization. Innovate ways to solve known tasks. Identify new issues.

Tasks / Decision Points

Deliverable
 Continuous Action
 Decision Point
 Completed



Completed

1. Identify/Refine the current process for base event management
2. Establish wing meetings with dorm management staff
3. Create Wing Welcome Letter
4. Incorporate training into foundational courses
5. Incorporate training FTAC/FTOC briefings to educate YAB
6. Create training opportunities for spouses
7. Develop Gp/Sq cross training plan (orientation)
8. Incorporate IDO in major wing planning events
9. Establish tasking rate for key ground support elements

LOE 1: ONE Community

1. Survey Airmen to determine what they want vs what we think
2. Involve Airmen in the Community Action Team
3. Streamline events for Airmen where they don't end up working the event + leadership supports their attendance
4. Build mechanism for Airmen to give feedback/pitch ideas
5. Create options to connect w/family back home (off set travel cost)
6. [...] for a day
7. Revamp sponsorship program
8. Develop spouse immersion program
9. Reestablish Wing sponsorship program, training, and adherence
10. Ensure our websites include focus on installation mission partners

11. Assess PPC code effectiveness
12. Develop video segments on the "whys" medical access / housing
13. Unaccompanied housing swing plan
14. AERO club building modernization (office, sim, classroom, hangar)
15. Wing PT events (fun run, Murph, Bataan, Flight Line run)
16. Plus up Friendship Club – getting old – need youth
17. Middle school sports, youth sports, varsity sports
18. Quarterly mission partner sync.

LOE 2: Synchronized Logistics

19. Develop increment monitor training plan / create continuation training ops
20. Identify and understand current regulations and their applications
21. Develop TTPs for proper management and tasking of Combat Mobility Flight
22. Develop wing process / Practice playbook / Wing's training plan
23. Build playbook to capture bottlenecks/checklists/waivers/top-cover
24. (Decision) Test & Evaluate wing's process
25. Shape Sq Training plans to align with wing training plan
26. Deliberately develop 2Gs – interact with MFM for right-sizing
27. Assess space utilization/current and equipment
28. ID/define requirements; current & forecasted for inbound WRM
29. ID/define requirements; current & forecasted for OPLAN support

30. Update reception plan / BSP Develop WRM laydown plan
31. (Decision) Articulate risks/LIMFACs & prioritize Wing funding accordingly
32. Test organic self-generation & reception
33. Invest in ground trans capabilities
34. Hot pit / SFO
35. Train with real cargo/people
36. (All) Identify personnel requirements to meet growth demand and get those requirements validated (UMDs)
37. C2 PACE Plan
38. Robust MAF ACE capabilities
39. Modernize WOC capabilities
40. Reliable access & use of WRM & MHE
41. Engine running on/off load as primary C-130 load option.



Completed

1. Identify/Refine the current process for base event management
2. Establish wing meetings with dorm management staff
3. Create Wing Welcome Letter
4. Incorporate training into foundational courses
5. Incorporate training FTAC/FTOC briefings to educate YAB
6. Create training opportunities for spouses
7. Develop Gp/Sq cross-training plan (orientation)
8. Incorporate IDO in major wing planning events
9. Establish tasking rate for key ground support elements

LOE 3 : Discipline & Readiness

42. Develop warrior mindset / ethos – Establish narrative
43. Define the Wing's MRA philosophy
44. Develop frontline supervisors
45. Create Yokota AB unclass strategic brief & incorporate into all New-comers onboarding
46. Develop Exercise Briefings / Theater Briefings BR
47. Target specific audiences in wing stand-up (identify who has the right classification to receive this information)
48. Provide talking points to Sr. Leaders to provide consistent and frequent messaging - "In a minute"
49. Create realistic exercise environment – realistic leadership scenarios / senior leader involvement
50. Create bi-lingual products made in tandem w/ English messaging
51. Match training tasks to training requirements/ nest within existing guidance – not just to check a box
52. Apply Jt Training System methodology IAW Jt Exercise Lifecycle, Update plans throughout the year and then sync/test/eval processes (continuous process - annual), Develop process to use and monitor

- IGEMS/LLs use for post-exercise review
53. Create periodic vector checks b/t WIT members & leadership
54. Prioritize relationships/engagements (determine the who, advocate for higher lvl involvement, development same narrative)
55. Limit cultural events to 1-2 max / incorporate POC into Wg events
56. Establish/finalize gatekeeping process, & Develop messaging plan to reinforce gatekeeping process
57. Establish a centralized process for tracking & accessing orders (SIPR)
58. Define wing structure and concept
59. Develop messaging campaign for new wing concept
60. Develop training requirements for new wing structure
61. Reinvest in IPE (base pop body armor, helmets, mag pouches)
62. Relocate Guam CRG to Yokota
63. Improve c-UAS capabilities
64. Incorporate wing training requirements into PACAF exercises
65. Rodeos between Beverly Mornings
66. Consolidate BM- combine BMs- Big Bev (w/other wings)
67. Understand future plans and capabilities
68. COG analysis
69. Establish wing training POC

LOE 4 : Infrastructure

70. Resolve CHP issue
71. Solve base drainage issue
72. Resolve AAFES flight kitchen location
73. Increase lodging capacity
74. Complete south overrun bypass road
75. Build Emergency Room
76. MDG parking (build a parking garage)
77. Replace expired HVAC systems

- into foundational courses
5. Incorporate training FTAC/FTOC briefings to educate YAB
6. Create training opportunities for spouses.
7. Develop Gp/Sq cross-training plan (orientation)
8. Incorporate IDO in major wing planning events
9. Establish tasking rate for key ground support elements

MISSION

**SUSTAIN AND MANEUVER FORCES
AT THE SPEED OF NEED**

VISION

**HUMBLE
UNDERTERRED
BOLD**

PRIORITIES

- 1) ONE COMMUNITY**
- 2) SYNCHRONIZED LOGISTICS**
- 3) DISCIPLINE AND READINESS**



374th Operations Group

MISSION

Execute rapid global mobility through agile airlift and support operations across the Indo-Pacific region

VISION

A team of professional Airmen. Committed to a free and open Indo-Pacific region

PRIORITIES

Agile Combat Employment (ACE), Joint All-Domain Command and Control (JADC2), Mission Ready Airmen (MRA), building and sustaining partnerships, caring for the community

36th Airlift Squadron

459th Airlift Squadron

374th Operations Support Squadron





374th Maintenance Group

MISSION

Safely generate and sustain tactical airpower to enable rapid global mobility across the Indo-Asia-Pacific region

VISION

Develop professional Airmen, united in excellence, driven to execute safe and compliant maintenance

PRIORITIES

Readiness, Mission, Professional Development and Families

374th Aircraft Maintenance Squadron



374th Maintenance Squadron



374th Mission Support Group

MISSION

Sustain and Maneuver Forces at the Speed of Need

VISION

Humble
Undeterred
Bold

VALUES

People, Partnerships, Presence

PRIORITIES

ONE Community, Synchronized Logistics, Discipline & Readiness

374th Communications Squadron



374th Civil Engineer Squadron



374th Contracting Squadron



337th Air Support Flight



374th Force Support Squadron



374th Security Forces Squadron



374th Logistics Readiness Squadron





374th Medical Group

Mission Partners

MISSION

Samurai medics providing ready, reliable care anytime, anywhere

VISION

Agile and resilient medics committed to ensuring a free Indo-Pacific region

PRIORITIES

Airmen, Readiness, Partnerships



374th Dental Squadron

374th Healthcare Operations Squadron

374th Medical Support Squadron



374th Operational Medical Readiness Squadron

374th Surgical Operations Squadron



- | | |
|----------------------------------|--------------------------------------|
| AFAA Pacific Area Audit Office | AF HQ Aircraft Maintenance/Testing |
| AFN (Defense Media Activity) | Army Aerial Port Liaison Office |
| Asian Office of Aerospace R&D | Defense Courier Service |
| Defense Special Rep Japan | Det 1, 373 ISR Gp |
| Det 2, PACAF Air Postal Sq | Det 10, Air Force News OL-C |
| Det 402, AFTAC | Det 621, AFOSI |
| DISA-PAC Japan | DLA-Energy |
| DODDS Pacific, Japan | DTRA Inspection Directorate Japan |
| General Services Admin (GSA) | HQ Air Defense Command (JASDF) |
| HQ United Nations Cmd Rear HQ | USFJ |
| HQ 5 AF | Military Liaison Coordination Office |
| Navy Overseas Air Cargo Terminal | Pacific Regional Svc Center-Japan |
| Stars & Stripes (DMA) | TriCare Medical Activity |
| USAF Band of the Pacific | US Army Corps of Engineers |
| US Army Garrison Japan | US Coast Guard Activities Far East |
| 21 SOS | 21 SOAMXS |
| 515 AMOG | 730 AMS |
| 6 Field Investigation Squadron | AFOSI |

PACAF Battle Rhythm Meetings

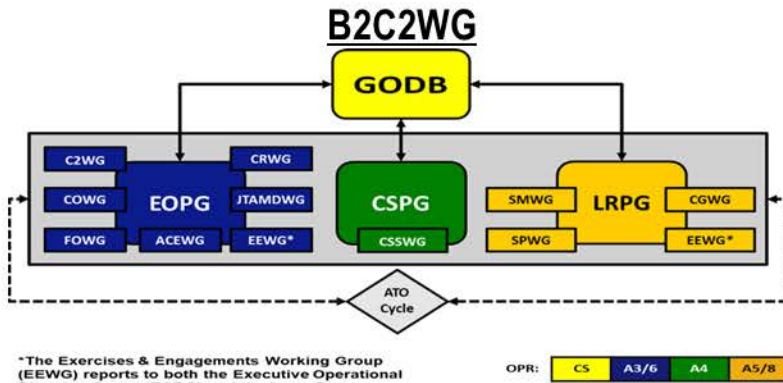
374 AW Battle Rhythm

Operations & Intelligence (O&I) - Air Component brief across PACAF staff agencies. Held M/W/F 0900W.

General Officer Decision Board (GODB)* - Weekly decision/guidance/vector from A-Staff Directors. Held Tue 1400W. * = Meeting as needed.

Commander's Update Brief (CUB) - Weekly update brief to COMPACAF. Focus alternates each week between AFFOR (SECRET/REL) and Operations (TS/SCI). Held Wed 1300W.

CoS Sync - Weekly sync between CoS & A-Staff. Held Thurs 0800W.



Boards, Bureaus, Centers, Cells, and Working Groups (B2C2WGs) are formal cross-functional organizations and coordination events that exist at all levels of the HQ PACAF decision-making process

Boards: An organized group of stakeholders that meets with the purpose of gaining guidance or decision(s):

- Command Board:** Obtain guidance or a specific decision
- Functional Board (Planning Groups):** Gain functionally specific guidance or decisions from the Commander based on staff action, e.g., Executive Operational Planning Group (EOPG), Long-Range Planning Group (LRPG), Combat Support Planning Group (CSPG)

Working Groups (WG): An enduring cross-functional organization formed around a specific function whose purpose is to provide analysis and products to internal/external customers

Operational Planning Teams (OPT): Established to solve a single problem related to a specific task or requirement on a single event horizon

Quarter	Date	1st	Date	2nd	Date	3rd	Date	4th	Date	5th		
Q1	Jan 25	0900	Jan 7	Readiness Update Brief WSU Bush Update	Jan 14	Intel Brief WSU	Jan 21	Classified Orders Brief WSU (Dec 2024) CAB	Jan 28	Intel Brief WSU CIMB	N/A	
		1000		Construction Brief		Cops/Robbers		Eagles Sync		Eagles Sync		
		1100		Eagles Sync		Eagles Sync		Eagles Sync		Eagles Sync		
	Feb	0900	Feb 4	Readiness Update Brief WSU Bush Update	Feb 11	Intel Brief WSU	Feb 18	Classified Orders Brief WSU	Feb 25	Intel Brief WSU Q2 Financial Mgmt		
		1000		ESOH Council		Cops/Robbers		Facilities Board		Q2 Financial Mgmt		
		1100		Eagles Sync		Eagles Sync		Eagles Sync		Eagles Sync		
	Mar	0900	Mar 4	Readiness Update Brief WSU Bush Update	Mar 11	Intel Brief WSU	Mar 18	Classified Orders Brief WSU	Mar 25	Intel Brief WSU Status of Discipline		
		1000		EMWG		Cops/Robbers		CAB		Status of Discipline		
		1100		Eagles Sync		Eagles Sync		Eagles Sync		Eagles Sync		
Q2	Apr	0900	Apr 1	Readiness Update Brief WSU Bush Update	Apr 8	Intel Brief WSU	Apr 15	Classified Orders Brief WSU	Apr 22	Intel Brief WSU Q3 Financial Mgmt	Apr 29	WSU CIMB
		1000		Snow and Ice		Cops/Robbers		Construction Brief		Q3 Financial Mgmt		Eagles Sync
		1100		Eagles Sync		Eagles Sync		Eagles Sync		Eagles Sync		Eagles Sync
	May	0900	May 6	Intel Brief WSU Bush Update	May 13	Readiness Update Brief WSU	May 20	Intel Brief WSU	May 27	Classified Orders Brief WSU	N/A	
		1000		Cops/Robbers				Facilities Board				
		1100		Eagles Sync		Eagles Sync		Eagles Sync		Eagles Sync		
	Jun	0900	Jun 3	Intel Brief WSU Bush Update	Jun 10	Readiness Update Brief WSU	Jun 17	Intel Brief WSU	Jun 24	Classified Orders Brief WSU Status of Discipline	N/A	
		1000		Cops/Robbers				CAB		Status of Discipline		
		1100		Eagles Sync		Eagles Sync		Eagles Sync		Eagles Sync		
Q3	July	0900	Jul 1	Intel Brief WSU Bush Update	Jul 8	Readiness Update Brief WSU	Jul 15	Intel Brief WSU	Jul 22	Classified Orders Brief WSU	Jul 29	WSU CIMB
		1000		Cops/Robbers				Construction Brief				Eagles Sync
		1100		Eagles Sync		Eagles Sync		Eagles Sync		Eagles Sync		Eagles Sync
	Aug	0900	Aug 5	Readiness Update Brief WSU Bush Update	Aug 12	Intel Brief WSU	Aug 19	Classified Orders Brief WSU	Aug 26	Intel Brief WSU Q4 Financial Mgmt	N/A	
		1000		ESOH Council		Cops/Robbers		Facilities Board		Q4 Financial Mgmt		
		1100		Eagles Sync		Eagles Sync		Eagles Sync		Eagles Sync		
	Sep	0900	Sep 2	Readiness Update Brief WSU Bush Update	Sep 9	Intel Brief WSU	Sep 16	Classified Orders Brief WSU	Sep 23	Intel Brief WSU Status of Discipline	Sep 30	WSU CIMB
		1000		EMWG		Cops/Robbers		CAB		Status of Discipline		Eagles Sync
		1100		Eagles Sync		Eagles Sync		Eagles Sync		Eagles Sync		Eagles Sync
Q4	Oct	0900	Oct 7	Intel Brief WSU Bush Update	Oct 14	Readiness Update Brief WSU	Oct 21	Intel Brief WSU	Oct 28	Classified Orders Brief WSU Snow and Ice	N/A	
		1000		Cops/Robbers				Construction Brief		Snow and Ice		
		1100		Eagles Sync		Eagles Sync		Eagles Sync		Eagles Sync		
	Nov	0900	Nov 4	Intel Brief WSU Bush Update	Nov 11	Veteran's Day	Nov 18	Readiness Update Brief WSU	Nov 25	Classified Orders Brief WSU Q1 Financial Mgmt	N/A	
		1000		Cops/Robbers				Facilities Board		Q1 Financial Mgmt		
		1100		Eagles Sync		Eagles Sync		Eagles Sync		Eagles Sync		
	Dec	0900	Dec 2	Intel Brief WSU Bush Update	Dec 9	Readiness Update Brief WSU	Dec 16	Intel Brief WSU	Dec 23	Classified Orders Brief WSU Status of Discipline	Dec 30	WSU
		1000		Cops/Robbers				CAB		Status of Discipline		
		1100		Eagles Sync		Eagles Sync		Eagles Sync		Eagles Sync		Eagles Sync

	Legend				
Weekly	WSU		Eagles Sync		
Bi-Weekly/Monthly	Readiness Update Brief	Classified Orders	Intel Brief	Cops/Robbers	Bush Update
Quarterly	CAB	Facilities Board	Financial Management	Status of Discipline	CIMB
Semi-Annual	ESOH Council	EMWG	Construction		
Open					

374 Airlift Wing Gatekeeper

What is Gatekeeper?

The mission of Gatekeeper is to establish a strategic tracking and deconfliction process within the 374 AW Wing Plans & Programs (XP) office to ensure Commander's situational awareness and proper utilization of wing resources. Gatekeeper serves as an initial collection point for all installation receptions or support requests.

Who is required to submit events through Gatekeeper?

Any Department of Defense (DoD) organization external to the 374 AW requesting Yokota resources. Members of 374 AW units can submit on behalf of external organizations.

How are external non-DoD requests coordinated?

374 AW Public Affairs is the primary organization for non-DoD requests. If wing resources are required, Public Affairs will coordinate with XP.

How are 374 AW events coordinated?

374 AW units will coordinate through 374 AW Command Section (374 AW/CCA) and 374 AW Director of Staff (374 AW/DS)

Submit **60 days** prior to your event with the QR code or follow the link:

<https://forms.osi.apps.mil/r/q1pPpy6VR1>

What types of events are managed?

Events requested by external DoD organizations that require support from or use of 374 AW resources. Examples include, but are not limited to:

Inspections & Audits

Unit Evaluations

Exercises

Conferences

Training Events

Inbound Aircraft Operations

Basing Action Events

Scan the QR code to submit your event:



Initial Request

- 1) Event details are submitted.
- 2) An email is automatically generated to notify 374 AW/XP.
- 3) XP initiates schedule deconfliction and approval coordination as required.

Approval Coordination

- 1) XP coordinates support requirements with Reception Working Group or group leads as necessary.
 - 2) XP briefs the 374 AW/CC for final deconfliction and approval.
- Note: If additional information is required then the request will be put on hold.

Final Decision

- 1) If approved, XP will send an email to requestor and respective group(s) to proceed with finalizing coordination.
- 2) If denied, an email is sent to requestor and respective group(s) to discontinue coordination.

Yokota - Helpful Links

SharePoint Homepage:

<https://usaf.dps.mil/sites/yokota/374AW/wingstaff/cce/SitePages/Home.aspx>

Strategic Calendar:

https://usaf.dps.mil/sites/yokota/374AW/wingstaff/374AW_DS/Lists/Wing%20Strategic%20Calendar/calendar.aspx

374 FSS:

<https://yokota374fss.com>

Outdoor Recreation:

Yokota374fss.com/odr/

Information, Tickets, and Travel:

Yokota374fss.com/itt/

Military Personnel Flight:

Yokota374fss.com/mpf/

TMT:

<https://yokota.etms2.army.mil/>

374 AW Standing Orders:

https://usaf.dps.mil/sites/yokota/374AW/Yokota%20Policy%20Letter%20Library/Forms/AllItems.aspx?csf=1&web=1&e=ilhiHz&CID=1caeefb%2D6122%2D441b%2Da2ec%2D1293dc791184&FolderCTID=0x012000733094083B82E541AE5C939666100B6C&id=%2Fsites%2F_yokota%2F374AW%2FYokota%20Policy%20Letter%

374AW/XP:

<https://usaf.dps.mil/sites/yokota/374AW/wingstaff/xp/SitePages/Home.aspx>




Scan to stay connected with
Yokota Air Base!

CY 2025 Holiday Schedule

Holiday	Observed day	Family Day
New Year's Day	Wed, 1 Jan 25	Tues, 31 Dec 24 & Thurs, 2 Jan 25
Martin Luther King Jr. Day	Mon, 20 Jan 25	Mon, 17 Jan 25
President's Day	Mon, 17 Feb 25	Fri, 14 Feb 25
Spring Day*	Fri, 28 Mar 25	Mon, 31 Mar 25
Family Day*	Fri, 18 Apr 25	Fri, 18 Apr 25
Memorial Day	Mon, 26 May 25	Fri, 23 May 25
Juneteenth	Thurs, 19 Jun 25	Fri, 20 Jun 25
Independence Day	Fri, 4 Jul 25	Mon, 7 Jul 25
Family Day*	Fri, 15 Aug 25	Fri, 15 Aug 25
Labor Day	Mon, 1 Sept 25	Fri, 29 Aug 25
Columbus Day	Mon, 13 Oct 25	Fri, 10 Oct 25
Veteran's Day	Tues, 11 Nov 25	Mon, 10 Nov 25
Thanksgiving	Thurs, 27 Nov 25	Fri, 28 Nov 25
Christmas	Thurs, 25 Dec 25	Fri, 26 Dec 25
New Year's Day	Thurs, 1 Jan 26	Fri, 2 Jan 26

*PACAF theater training holidays (normal workday for MLC employees and DoD civilians)

Disaster Preparedness



YOKOTA AB EMERGENCY MANAGEMENT PROGRAM

BUILD A KIT

SMART CARD

GO BAG ESSENTIALS

- 5 DAYS SUPPLY OF WATER AND NON PERISHABLE FOOD
- COMPLETE CHANGE OF CLOTHES & STURDY SHOES
- TOOTHBRUSHES, SOAP, TOWELS AND TOILET PAPER
- EATING UTENSILS, CAN OPENER, POCKET TOOL SET, AND WATERPROOF MATCHES
- FIRST AID KIT, WHISTLE & BLANKET OR SLEEPING BAG
- FLASHLIGHT, RADIO, PHONE CHARGER & SPARE BATTERIES
- LIST OF EMERGENCY CONTACTS, MEETING PLACES AND A LOCAL MAP
- BIBLE, CREDIT CARDS, CASH & EXTRA SET OF HOUSE & CAR KEYS
- MASKS, WATERPROOF TAPE, AND PLASTIC SHEETING FOR SHELTER
- WATERPROOF CONTAINER WITH NEEDED MEDICATION, COPIES OF PRESCRIPTIONS, AND OTHER IMPORTANT DOCUMENTS

MAINTAINING YOUR KIT

assembling your kit remember to maintain it so it's ready when needed:

- Keep canned food in a cool, dry place.
- Store boxed food in tightly closed plastic or metal containers.
- Replace expired items as needed.
- Re-think your needs every year and update your kit as your family's needs change.

KIT STORAGE LOCATIONS

Since you do not know where you will be when an emergency occurs, prepare supplies for home, work and cars.

HOME


Keep this kit in a designated place and have it ready in case you have to leave your home quickly. Make sure all family members know where the kit is kept.

WORK

Be prepared to shelter at work for at least 24 hours. Your work kit should include food, water and other necessities like medicines, as well as comfortable walking shoes, stored in a "grab and go" case.

CAR

In case you are stranded, keep a kit of emergency supplies in your car.



SMART CARD

For more information contact the Yokota AB Office of Emergency Mgmt | 225-7930 or BLDG 1296



- A Typhoon is the strongest type of tropical cyclone, accompanied by torrential rain, tornadoes, and sustained winds of 74 mph or greater
- Typhoon season for Japan
 - June through September
 - However, typhoons have been known to develop as early as May and as late as November
- The joint U.S. Navy and Air Force Typhoon Warning Center, Guam, provides tropical cyclone warnings to the U.S. Military agencies in Japan. Upon receipt of these warnings, the Commander, U.S. Forces Japan/5 AF will disseminate Tropical Cyclone Conditions of Readiness or "TCCORs" to the Kanto Plain
- TCCORs simply indicates how soon we can expect the storm to affect the area
- If you go to a shelter, stay there until told by local authorities that it is safe to leave

Primary Disaster Shelters

- Yujo Recreation Center (Bldg. 327)
- Samurai Fitness Center (Bldg. 689)
- East Gym (Bldg. 4313)
- East Elementary School (Bldg. 4319)
- West Elementary School (Bldg. 1240)

Conversions

1 mph = 0.868976 knots
1 mph = 1.61 kph

Emergency Management Contacts

Installation Emergency Manager & Flight Superintendent

MSgt Ouellette, Shaun
225-1164

Flight NCOIC

TSgt Anderson, Andrew
225-1177

Flight Operations

SSgt Spaulding, Bradley
SrA Brooks, Vincent
225-1171/7930



Helpful Links

USAF Be Ready Program:
<https://www.beready.af.mil/>

Department of Homeland Security (DHS)
<https://www.ready.gov/>

Federal Emergency Management Agency (FEMA)
<https://www.fema.gov/>

Emergency Management

Typhoon Awareness



374 Civil Engineer Squadron
Yokota Air Base, Japan
COA: May 2023

Typhoon Preparedness



TCCORs

TCCOR 5: Winds \geq 50 knots (58 mph) sustained or gusts \geq 60 knots are possible within 96 hrs.

TCCOR 4: Winds \geq 50 knots (58 mph) sustained or gusts \geq 60 knots are possible within 72 hrs. Personnel should obtain emergency supplies.

TCCOR 3: Winds \geq 50 knots (58 mph) sustained or gusts \geq 60 knots are possible within 48 hrs. Personnel should fill vehicle & grill gas tanks & ensure sufficient money and important documents are easily accessible.

TCCOR 2: Winds \geq 50 knots (58 mph) sustained or gusts \geq 60 knots are anticipated within 24 hrs.

TCCOR 1: Winds \geq 50 knots (58 mph) sustained or gusts \geq 60 knots are occurring or anticipated within 12 hrs.

TCCOR 1 Emergency: Winds of 50 knots sustained or gust factors of 60 knots or greater are occurring at a particular installation. All personnel will stay indoors away from windows.

TCCOR 1 Recovery: All non-essential personnel should remain indoors while damage assessment and cleanup is accomplished.

TCCOR ALL CLEAR: The storm is over and not forecast to return, and recovery efforts are complete. Personnel will resume normal activities.

During an evacuation

- Follow the instructions and advice of the authorities.
- If time permits, secure your home before leaving. Bring outside possessions inside; disconnect any electrical appliances or equipment that can't be moved; lock doors and windows.
- Travel with care. Leave early enough so you aren't trapped by flooded roads, fallen trees, or wires.
- As you travel, keep listening to the radio for additional information and instructions for the local area.
- If you go to a shelter, stay there until informed by local authorities that it is safe to leave.



Stay tuned to AFN the Eagle 810 for local conditions and information.

*Informing People Today,
So They Survive Tomorrow!*

Emergency Kit

Before the typhoon, consider putting together an emergency kit. This kit should contain (at minimum):

- First-Aid kit
- Canned/sealed food that does not require cooking
- Medications
- Water (preferably in plastic jugs)
- Flashlights or lanterns
- Extra batteries
- A blanket or sleeping bag
- A set of clean clothes
- Money (both dollars and yen)
- Battery powered radio
- Sturdy shoes
- Baby items (Diapers & formula)
- Tape for windows
- Feminine hygiene items
- Pet food (if pets are owned)

Follow these rules

- Keep your radio or television on and tune into Yokota Weather Channel, Commanders Channel, & AFN.
- Plan your route before the storm arrives & avoid the last-minute hurry which might leave you trapped or unprepared.
- Leave low lying areas that could be swept by high tides or storm waves
- Secure outdoor objects that might be blown away.
- Remain indoors during the typhoon, travel is extremely dangerous when winds are whipping through your area

